

Grasso RC 2111 package

Specifications

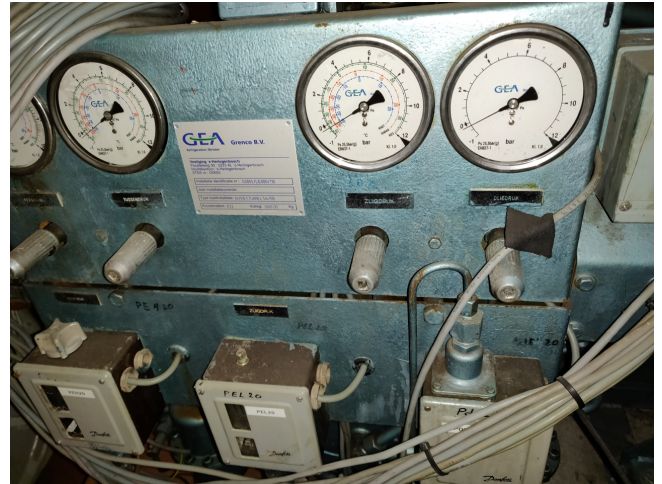
Brand	Grasso
Type	RC 2111 package
Refrigerant	NH 3 / Freon
kW at -20°C/+40°C	95,1
kW at -30°C/+40°C	79,2
kW at -40°C/+40°C	53,1
Electromotor Specs	55 kW at 1465 RPM
Pressure safety switches	✓
Hp/Lp/Op	
Pressure gauges	✓
Hp/Lp/Op	
Liquid receiver	✓
Liquid receiver ltr.	51
m3 / h	266
Remarks	Capacity based on -25°C/+40°C
Package / Rack	✓
Stock	1



Description

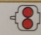

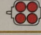

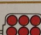
Used Grasso RC 2111 package

Used Gea - Grasso RC 2111 two-stage V-belt driven compressor with 55 kW electromotor at 1465 RPM. For all the other specs (if available), see the picture of the manufacturer model plate or the attached pdf file. *Why choose for HOSBV? Were not only the largest used refrigeration specialist in Europe, but also, we deliver all equipment including an extensive test, warranty and industrial cleaning. *Optional we can also perform a new paint job and arrange the logistics.





Performance table

cylinder arrangement	type	single-stage				two-stage	
			NH ₃	R12	R22	R502	NH ₃
	RC 211	Q ₀ P _e	163 34	93 25	157 37	160 47	
	RC 311	Q ₀ P _e	245 50	140 36	236 55	241 70	RC 2111 Q ₀ P _e 45 23
	RC 411	Q ₀ P _e	326 65	186 48	314 73	321 93	RC 3111 Q ₀ P _e 63 31
	RC 611	Q ₀ P _e	490 97	279 70	471 108	481 138	RC 4211 Q ₀ P _e 91 44 RC 5111 Q ₀ P _e 92 47
	RC 911	Q ₀ P _e	734 144	418 104	707 165	722	RC 6311 Q ₀ P _e 136

Technical data of Grasso two-stage compressors

Delivery programme

Series	Type	Cylinders				Rotational speed		LP swept volume at max. speed (m ³ /h)	Standard part load steps expressed in percentage of full load LP swept volume (%)
		Bore (mm)	Stroke (mm)	Number	Volume ratio	min.	max.		
RC9	RC219	110	85	2	1	600	1450	141	100-75-50
	RC429			4	2			281	
RC11	RC2111	160	110	2	1	400	1000	265	100-67-50-40-33-29-25-23-20-18-16-14-12-10-8-7-6-5-4-3-2-1
	RC3111			3	1			398	
	RC4211			4	2			531	
	RC5111			5	1			664	
	RC6311			6	3			796	
	RC7211			7	3			929	
	RC8411			8	4			1062	
	RC9311			9	3			1194	
	RC10211			10	5			1327	

